



The Hong Kong Japanese Chamber
of Commerce & Industry

香港日本人商工会議所



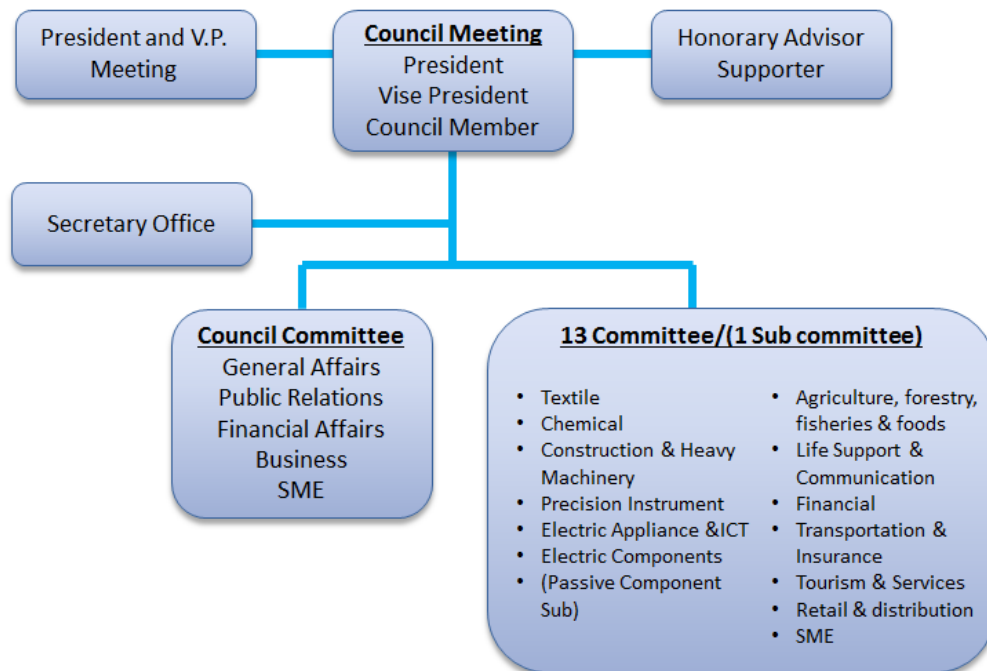
Introduction

▶ Established in 1969~

Derived from HK Japanese Club Economics Committee,
starting with member of 99 companies.

▶ Members: About 510 companies.

HKJCCI Structure



※1 company can join cumulative total 48 committees.



Our Motto and Activities

▶ We dedicate to our members' business development!

We tackle not only with industry-wide problems but also with individual member's concerns.



Photo:

Left: International Business Committee (IBC)

Right: Exchange view among IBC members and Government officials.

Below: "One Belt One Road" Initiative study with HKGCC, Oct 2016

▶ Networking with other organizations

Not only within HKJCCI, we organize networking events with HKTDC, Invest HK, and international Chambers such as AmCham & British Cham etc. to expand opportunities of our members.





Group Meetings and Seminars

▶ 13 Group hold meetings regularly.

You can attend any committees regardless of your company's nature. HKJCCI also organize lectures, symposiums, business matching, domestic and overseas inspection.

▶ Occasional seminars for common interests.

Our seminars are targeted for everyone's interest, such as wage structures and trend in both Hong Kong and China, hot topics in all over Asia etc.

* HK\$100/pax is charged as attendance fee for any seminars (Not for the group meetings and information session “説明会”). It's waived only when the seminar is organized solely via ZOOM, due to HK Government restrictions.



Lecturer at Life Communication committee



Textile committee on Hanoi inspection.



List of Seminars

Hot topics for everyone's interest...

(Please ask our staff for schedule details.)

History of Hosted Seminars in FY2021	Scheduled Seminars in FY2022
For HK Newcomers	For HK Newcomers
Personal Information Protection Law (PIPL) in China	Co-hosting seminar with JETRO
Enforcement of China Export Control Law	South China
South China	Exchange-rate Movements
Exchange-rate Movements	Asian Economy: Summary of FY2021 & Prospect on FY2022
Summary of FY2020 & Prospect on FY2021	HK Salary / China Salary
HK Salary / China Salary	...and more.
Legal seminar on GBA	



Enrollment

- ▶ Application will be considered at Council Meeting on every odd month.

	Main Membership (Japanese Corp.)	Associate Membership (Non-Japanese Corp.)
Enrollment Fee	HK\$3,000	HK\$1,500
Annual Fee (Apr.~Mar.)	HK\$3,000/units (up to 5 units)	HK\$3,000/company

We look forward to hearing from you...!

The HK Japanese Chamber of Commerce & Industry

Unit 902, 9/F., Tower 535, 535 Jaffe Road, Causeway Bay, Hong Kong
Tel. 852-2577-6129 Fax.852-2577-0525

Please contact us at jpcham@hkjcci.com.hk